

Indigenous Patient Experience

Measuring Cultural Safety in Health Care

This work was done on unceded and ancestral Indigenous territories across Turtle Island.

We acknowledge with humility and respect the rights, interests, priorities, and concerns of First Nations, Métis, and Inuit Peoples throughout British Columbia and beyond.

University of British Columbia Learning Circle
April 17, 2025



Jenny Morgan, Gitxsan, EdD
University of Victoria



Alison Hill
BC Office of Patient-Centred Measurement

Session Objectives

1. Understand the role of the Patient-Centred Measurement Indigenous Advisory Committee in addressing inequities and anti-Indigenous racism.
2. Explore the five domains of measurement of culturally safe care.
3. Apply insights from the Indigenous Cultural Safety Module and potential for measurement application throughout the system.

Please note that this session will not be discussing data analysis as this is a continued work in progress.

BC Office of Patient Centred Measurement

Since 2003 the BC Office of Patient-Centred Measurement has collected patient perspectives about experiences and outcomes of care via surveys across health care sectors on behalf of the seven health authorities and the Ministry of Health.

Our direction and workplan are guided by the BC Patient-Centred Measurement Steering Committee.



BC Patient Centred Measurement

Our surveys give British Columbians a voice in assessing the quality and safety of their health care.

Cancer Care

Long Term Care

Surgical Services

Emergency Department Care

Acute In-Patient Care

Mental Health and Substance Use



Indigenous Patient-Centred Measurement

Up until 2020 the OPCM operated without Indigenous representation and leadership to inform meaningful change in Indigenous-specific racism or cultural safety.

In March 2020 we engaged with Indigenous experts and leaders who agreed to form an Indigenous Advisory Committee to guide us in addressing this gap and integrate Indigenous ways of knowing into healthcare measurement.





Mark Matthew
Simpco First Nation, IAC Co-
Chair, Director of Indigenous
Health, Health Quality BC



Stephen Thomson
Métis Citizen, Director, Health
Governance, Métis Nation
British Columbia



Jenny Morgan
Gitksan First Nation, Lax
Gibuu (Wolfclan) from the
House of Wiimuk'willixw,
Assistant Teaching Professor,
School of Social Work,
University of Victoria



Namaste Marsden
Wip Gamlaxyeltxw, Lax
Ganeda (Frog Clan), from
Gitanyow



Nancy Laliberté
Nehiyaw iskwew/Métis,
Senior Director, Systems
Transformation, Indigenous
Health, Provincial Health
Services Authority



Tabatha Berggren
Métis Citizen, Manager of
Health Research and
Evaluation, Métis Nation
British Columbia



Payal Batra
Immigrant and honorary
member of the Wolf Clan,
Director, Research and
Knowledge Exchange First
Nations Health Authority



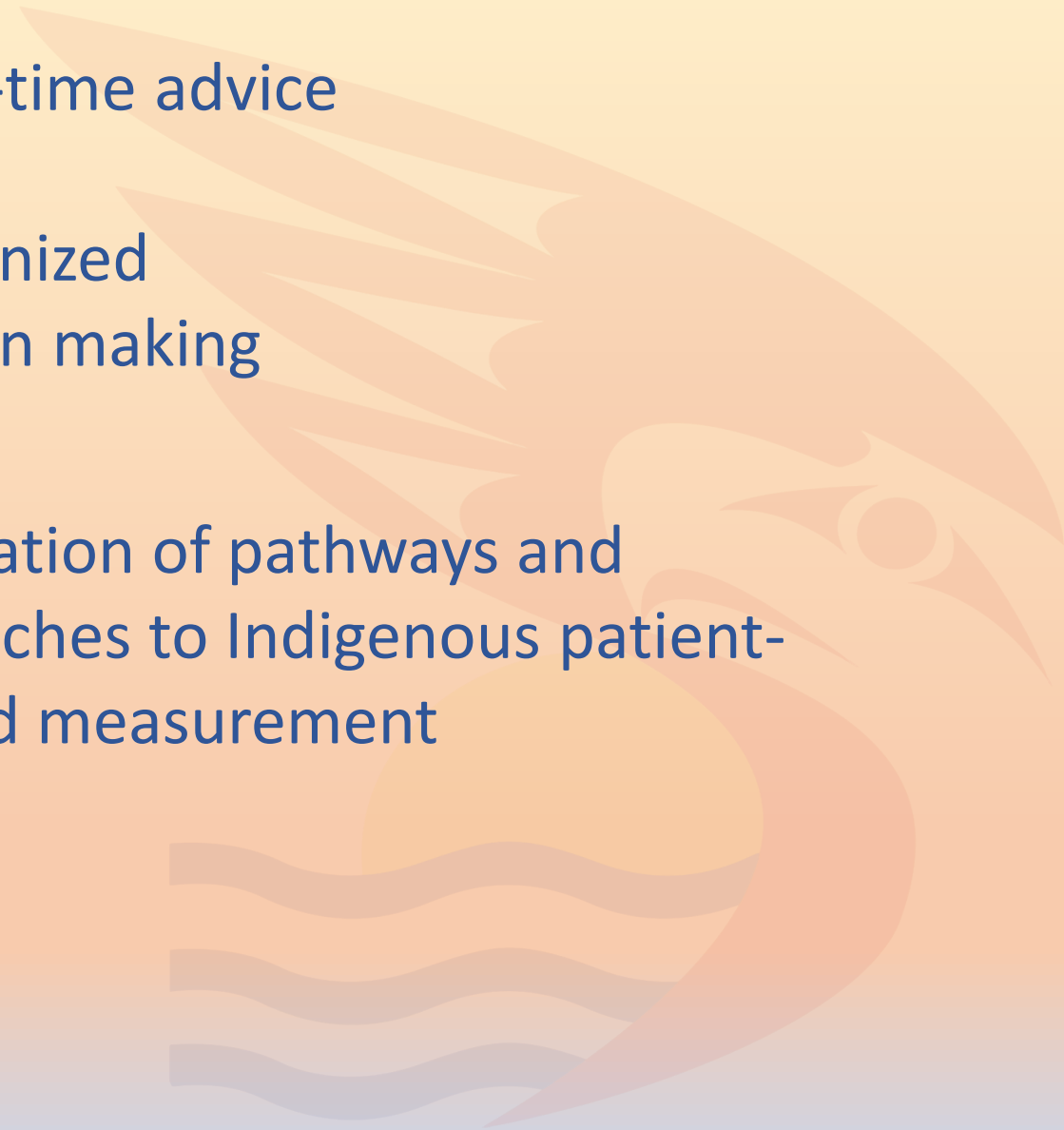
Brittany Bingham
shíshálh Nation, Assistant
Professor, Division of Social
Medicine, Faculty of
Medicine, University of
British Columbia

**The Indigenous
Advisory
Committee**
supports the
OPCM through

Just-in-time advice

Decolonized
decision making

Articulation of pathways and
approaches to Indigenous patient-
centred measurement



Decolonized Decision Making

Our *Fire Agreements* guide how we work together and our broader work to support the evolution of cultural safety and humility in health care.

Know why you are here.

Know your role.

Know what to contribute.

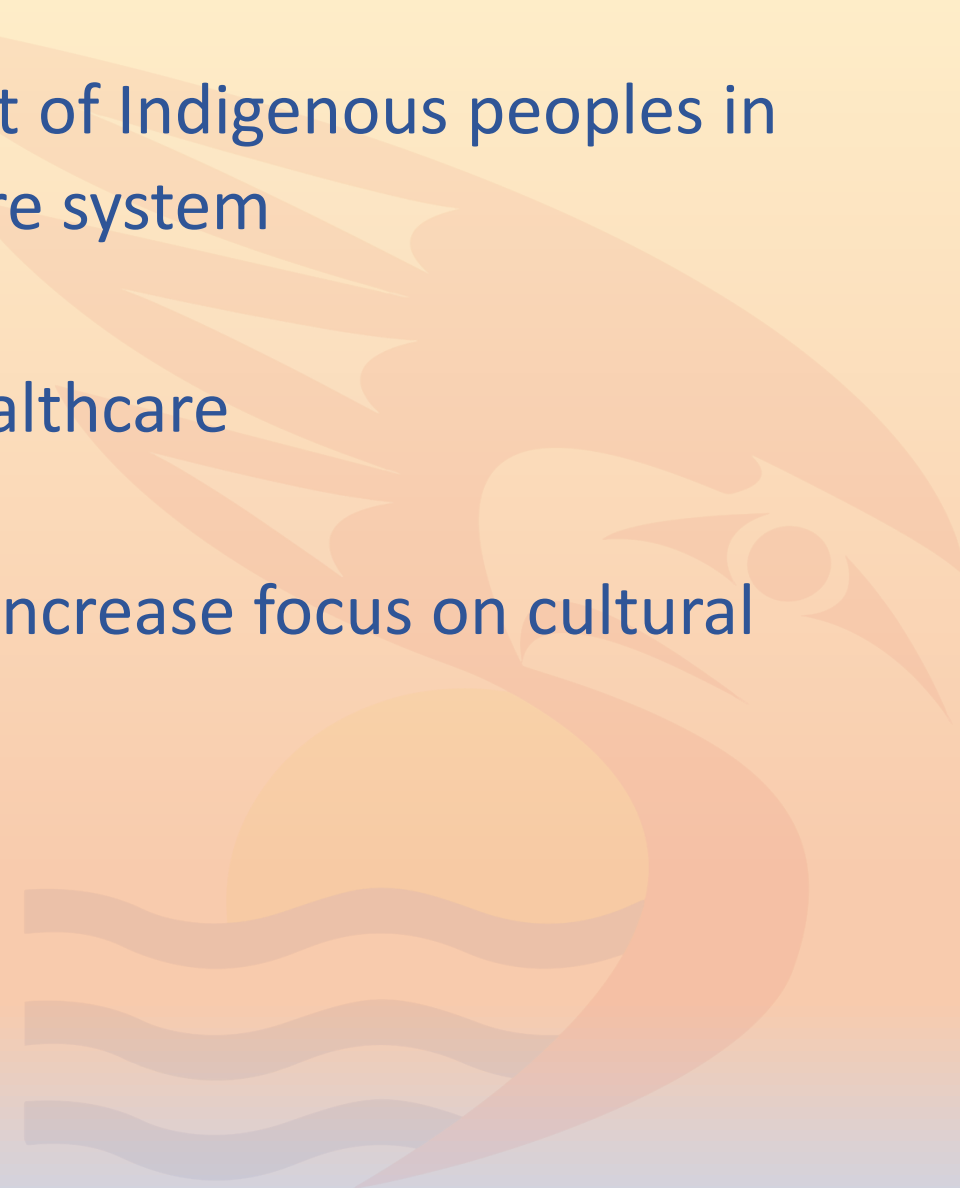


Factors that drive
the **Indigenous**
Advisory
Committee's work

Mistreatment of Indigenous peoples in
the healthcare system

Racism in healthcare

The need to increase focus on cultural
safety



**Landmark
declarations and
directives that
promote
cultural safety
for Indigenous
peoples**

In Plain Sight: Addressing Indigenous-specific Racism and Discrimination in B.C. Health Care (2020)

BC Declaration on the Rights of Indigenous Peoples Act (2019)

United Nations Declaration on the Rights of Indigenous Peoples (2007)

First Peoples, Second Class Treatment (2015)

Cultural Safety and Anti- Indigenous Racism

Cultural safety is an outcome based on respectful engagement that recognizes and strives to address power imbalances in the system. It results in an environment free of racism and discrimination.

*British Columbia Provincial Health
Services Authority, 2015*

Cultural Safety in Practice

*Health care professionals and organizations must acknowledge biases, prejudices, stereotypes and structures that may affect the quality of care provided... and hold themselves accountable for providing culturally safe care, as **defined by the patient** and their communities, and as **measured** through progress towards achieving health equity.*

Curtis et al 2019

*What do we
carry with us?*



*What can you place in
your basket to create
and sustain culturally
safe environments for
Indigenous patients?*



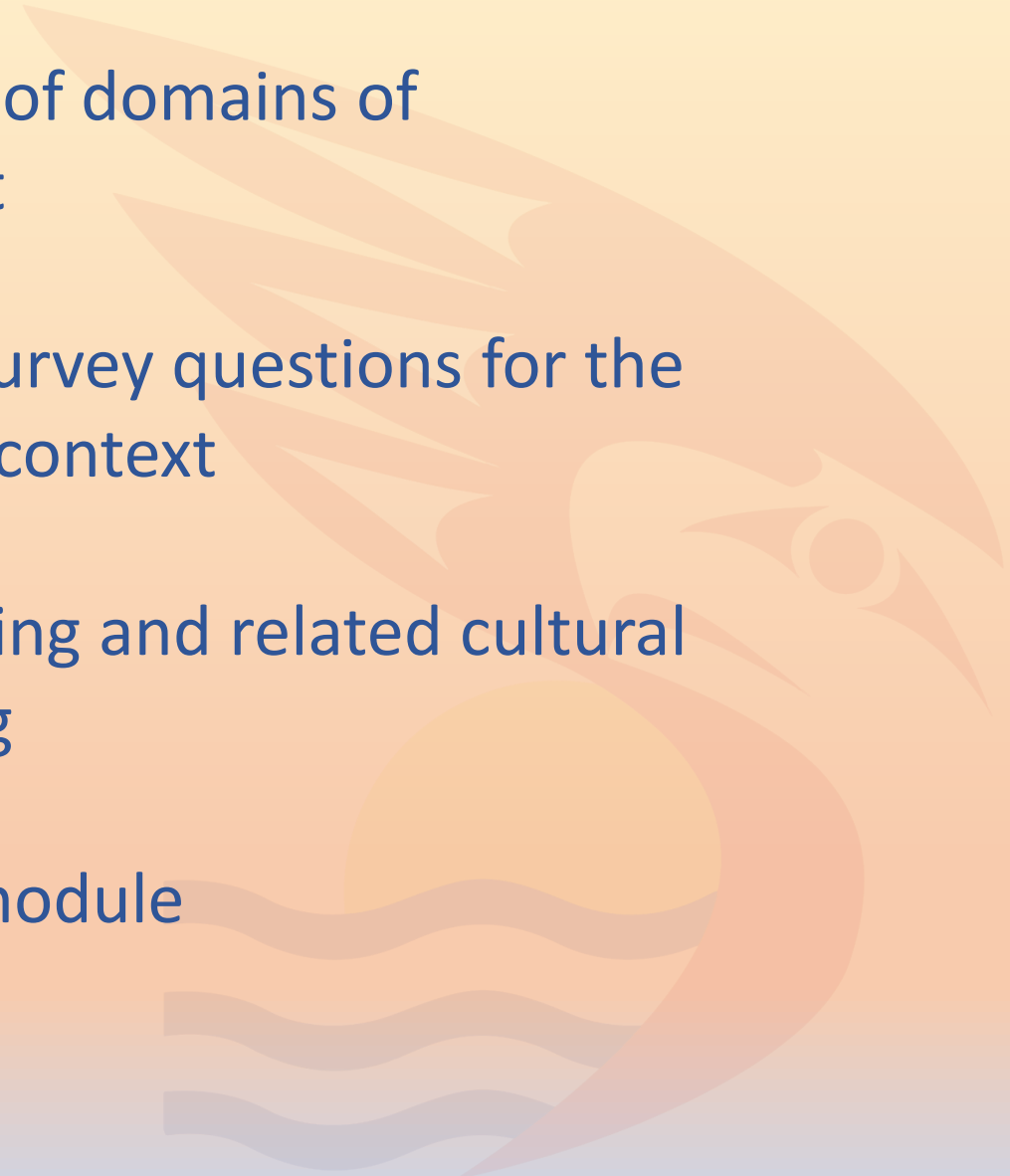
Creating a measure of **cultural safety**

Identification of domains of
measurement

Selection of survey questions for the
Primary Care context

Question testing and related cultural
safety training

Fielding the module



**The Five
Domains
of the
Indigenous
Cultural Safety
module**

Relationship-Based Care

Identity

Respect

Self-Determination and Equity

Discrimination



**Measuring
Indigenous
Cultural Safety**

**Relationship-
Based Care**



Measuring Indigenous Cultural Safety

Relationship- Based Care

During your most recent in-person or virtual health visit did you have trust in your care provider?

Before the end of your most recent in-person or virtual visit, did your care provider help you arrange any follow-up care or additional services you needed?

During your most recent in-person or virtual health visit did your care provider involve your family or friends in your care and treatment as much as you wanted?

Measuring Indigenous Cultural Safety

Identity



Measuring Indigenous Cultural Safety

Identity

In the past year, did you feel the care you received from your family doctor or nurse practitioner was wholistic?

In the past year, was your culture visible in the place where you received primary care? (for example, traditional art or language, Indigenous staff, or other signs of welcoming).

In the past year, did someone in your family doctor or nurse practitioner's office connect you with an Indigenous Patient Liaison?

Measuring Indigenous Cultural Safety

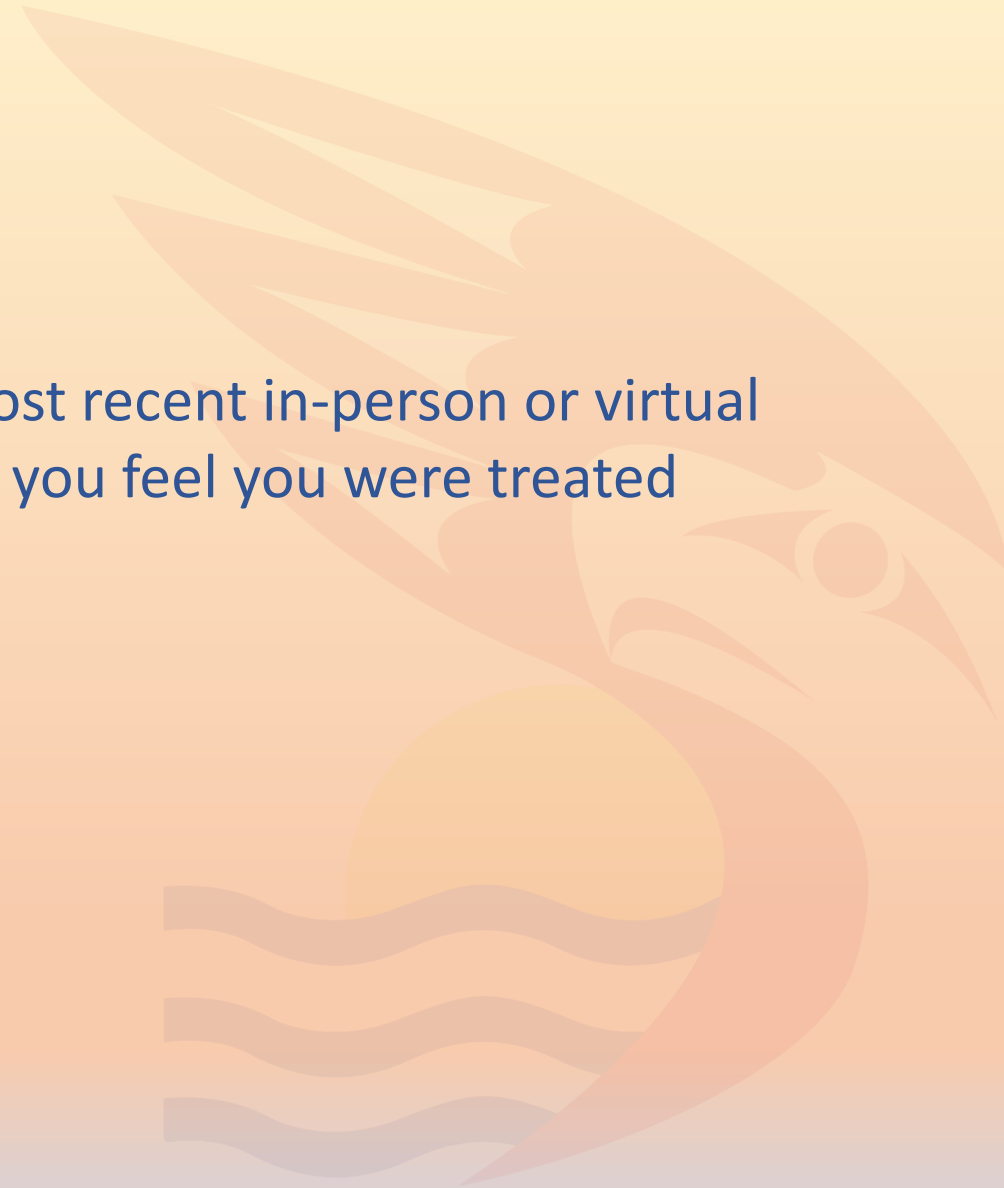
Respect



Measuring Indigenous Cultural Safety

Respect

During your most recent in-person or virtual health visit did you feel you were treated with respect?



**Measuring
Indigenous
Cultural Safety**

**Self-
Determination
and Equity**



Measuring Indigenous Cultural Safety

Self- Determination and Equity

During your most recent in-person or virtual health visit did you feel you could refuse treatment, medicine, tests or referrals?

In the past year, has a family doctor or nurse practitioner tried to help you get additional services you may need, such as social assistance, disability benefits, housing, or parenting support?

In the past year, did your care providers support you to include traditional wellness practices or traditional medicines into your care or treatment if you wanted them to?

Measuring Indigenous Cultural Safety

Discrimination



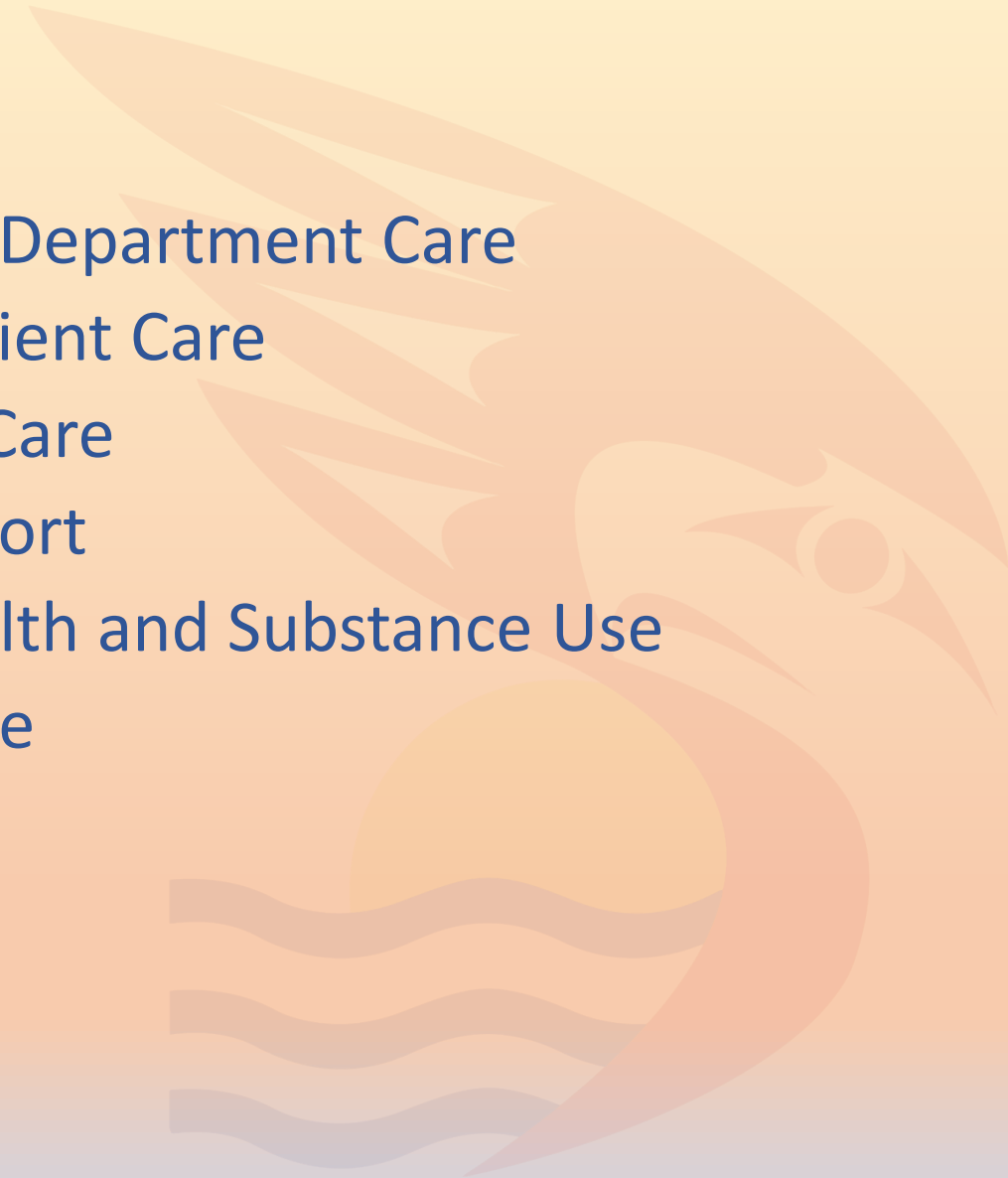
Measuring Indigenous Cultural Safety Discrimination

In the past year, did you ever feel a family doctor or nurse practitioner treated you unfairly because of race or cultural background?

If you felt you were treated unfairly, please tell us about your experience. Your responses are confidential.

**The Indigenous
Cultural Safety**
module
has been
fielded in **14**
Provincial
surveys

Emergency Department Care
Acute Inpatient Care
Long Term Care
Home Support
Mental Health and Substance Use
Surgical Care



Measuring Indigenous Cultural Safety Insights

Inclusion of the module in provincial surveys has elevated awareness of the importance of cultural safety in patient experiences, outcomes and overall health care.

Psychometric testing has confirmed that the module is measuring a single unidimensional concept.

Measuring Indigenous Cultural Safety Insights

A scoping review of research into Indigenous patient experiences and outcomes identifies a gap in the development of Indigenous measurement methods.

Ziabakhsh et al 2024

The Indigenous Advisory Committee's work addresses this gap by articulating pathways and approaches to Indigenous patient- centred measurement.

Measuring Indigenous Cultural Safety Next Steps

Sharing the cultural safety module with other measurement and research agencies

Consideration of analysis of text responses using large language processing

Continued development of the *Conceptual Framework of Indigenous Approaches in Patient Centred Measurement*

Measuring Indigenous Cultural Safety Next Steps

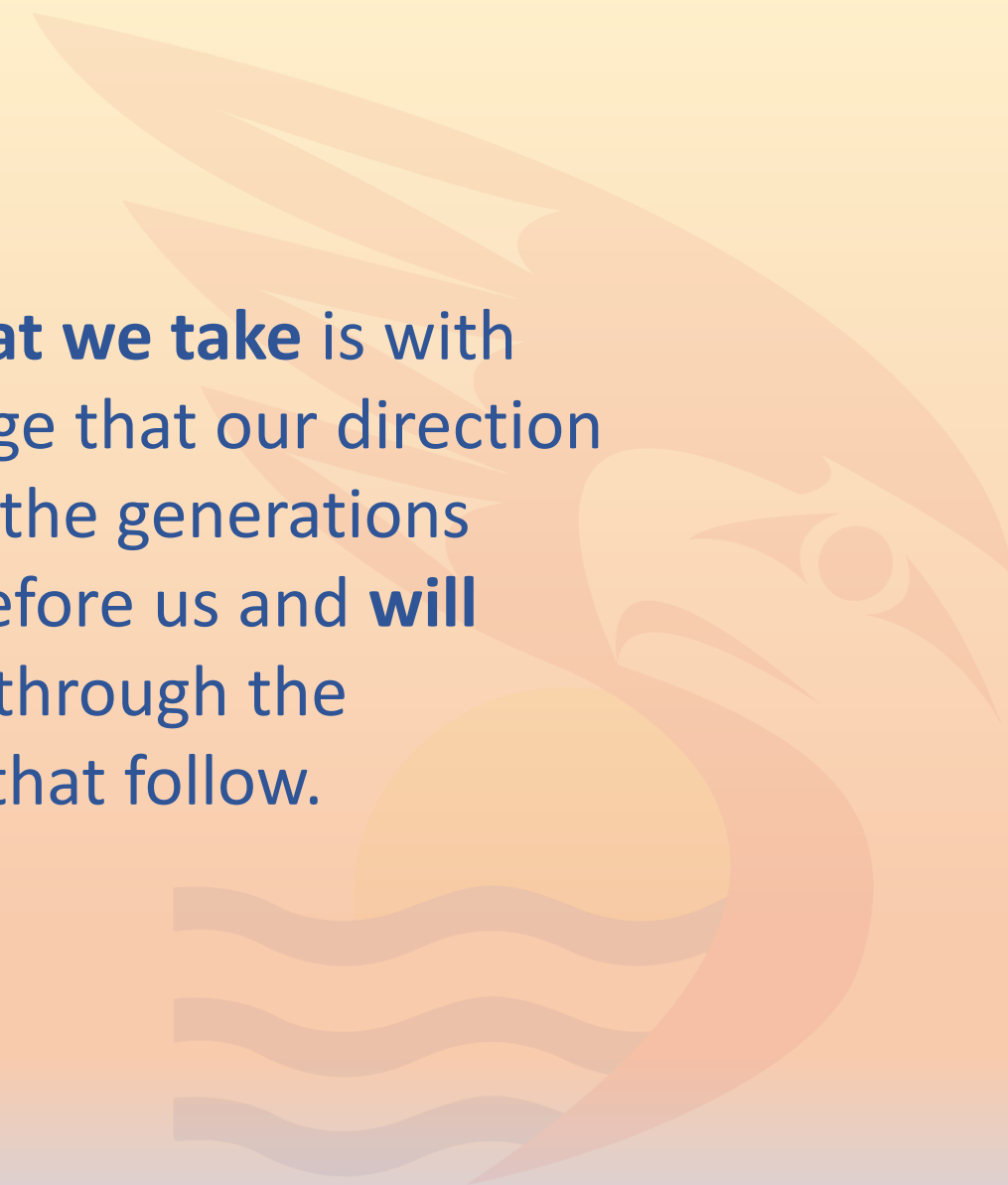
Work with Indigenous Communities in
the co-design of measurement systems

Continued work to explore how
Indigenous data sovereignty is
maintained



Measuring Indigenous Cultural Safety Seven Generations Forward

Each **step that we take** is with the knowledge that our direction is shaped by the generations who came before us and **will reverberate** through the generations that follow.



Indigenous Patient Experience

Measuring Cultural Safety in Health Care

This work was done on unceded and ancestral
Indigenous territories across Turtle Island.



Jenny Morgan, Gitxsan, EdD

University of Victoria
jenny32@uvic.ca



Alison Hill

BC Office of Patient-Centred Measurement
ahill8@providencehealth.bc.ca



Works Cited

Allan, Billie and Smylie, Janet (2015). [*First Peoples, Second Class Treatment: The role of racism in the health and well-being of Indigenous peoples in Canada*](#). Wellesley Institute, Toronto.

British Columbia Provincial Health Services Authority (2015). *San-yas Indigenous Cultural Safety*, Province of British Columbia, Victoria.

Curtis, E., Jones, R., Tipene-Leach, D., Walker, C., Loring, B., Paine, S., & Reid, P. (2019). [Why cultural safety rather than cultural competency is required to achieve health equity: a literature review and recommended definition](#). *International Journal for Equity and in Health*, London.

Government of British Columbia (2015). *Declaration of Commitment – Cultural Safety and Humility in Health Services Delivery for First Nations and Aboriginal People in British Columbia*. Victoria.

Government of British Columbia (2019). [Declaration on the Rights of Indigenous Peoples Act](#), Victoria.

Indigenous Advisory Committee (2022). [Intentions and Agreements](#). BC Office of Patient-Centred Measurement, Victoria.

Johnson, Harmony (2018). *Measurement of Cultural Safety & Humility in British Columbia*, University Of British Columbia, Vancouver.

Koptie, Steven (2009). [Irihapati Ramsden: the Public Narrative on Cultural Safety, First People's Child and Family Review. Vol. 4 No. 2](#). First Peoples: Child and Family Review. Ottawa.

National Commission on Truth and Reconciliation (2015). [Final Report of the National Commission on Truth and Reconciliation: Calls to Action](#). Winnipeg.

United Nations (2007). [United Nations Declaration on the Rights of Indigenous Peoples](#), Geneva.

Ziabakhsh, S et. al. (2024). [Patient Reported Outcome \(PROMs\) and Experience Measures \(PREMs\) for Indigenous Peoples: A Literature Exploration Scoping Review December 2024](#). International Indigenous Policy Journal, Toronto.